

START  
Short Term Assessment  
and  
Reablement Team

Overall Good  Read overall summary	Safe	Good ●
	Effective	Good ●
	Caring	Good ●
	Responsive	Good ●
	Well-led	Good ●

Mrs Amy Tipton - Registered Manager  
Mr Andy Begley - Nominated individual

The purpose of this presentation is to show how IBCF funding enhanced the **START** service and will provide some examples

**START** (Short Term Assessment and Reablement Team) is Shropshire Council's inhouse domiciliary care provider which supports people to regain lost skills, learn new ones, and generally increase their ability and independence.

### **START offers**

- A free Short-term assessment and re-enablement service (up to six weeks) to people who are discharged from hospital and to prevent admission to hospital.
- Support to Covid Positive people in their own homes.

**START** work with people, in their own home utilising a person centered, strength and asset based approach.

# IBCF Funding Provided Additional Staffing

## START Provision Pre IBCF

Service Manager

Registered Manager

Countywide Organiser

Assistant Organiser

6 Countywide Support Workers

Admin officer

## START Provision After IBCF Investment

1 Service Manager

1 Registered Manager

1 Countywide Organiser

2 Assistant Organiser

41 Countywide Support Workers

1 Admin officer

1 Admin Apprentice

3 Senior Support Workers

Creation of new  
Posts to ensure  
the service  
remains safe and  
CQC compliant

100% increase  
to manage increased  
referral activity  
review service  
capacity and  
rota's

58% increase  
To provide personal  
and support to  
their own h

51% Total staffing  
increase, contributing  
to the management  
of 350% increase  
activity within

## START Provision Pre IBCF

A reablement service Countywide

An Admission Avoidance Service

Acknowledgement/outcome of all referrals within 1 hour

Service could start within the same day

START supported up to 20 people daily

There has been a  
350% increase in the  
total number of  
people being  
supported within  
START

71 being supported

8/01/21

## START Provision After IBCF Investment

Provide domiciliary care and or/bridging services that will facilitate prompt and timely discharges from hospital

Provide short-term, individual and holistic rehabilitation programmes to help people improve their independence with everyday tasks such as washing, dressing, walking and eating

Assess and Provide low level equipment through their specially trained Trusted Assessors

Provide specialist Social Work/Occupational Therapist service in line with the Care Act.

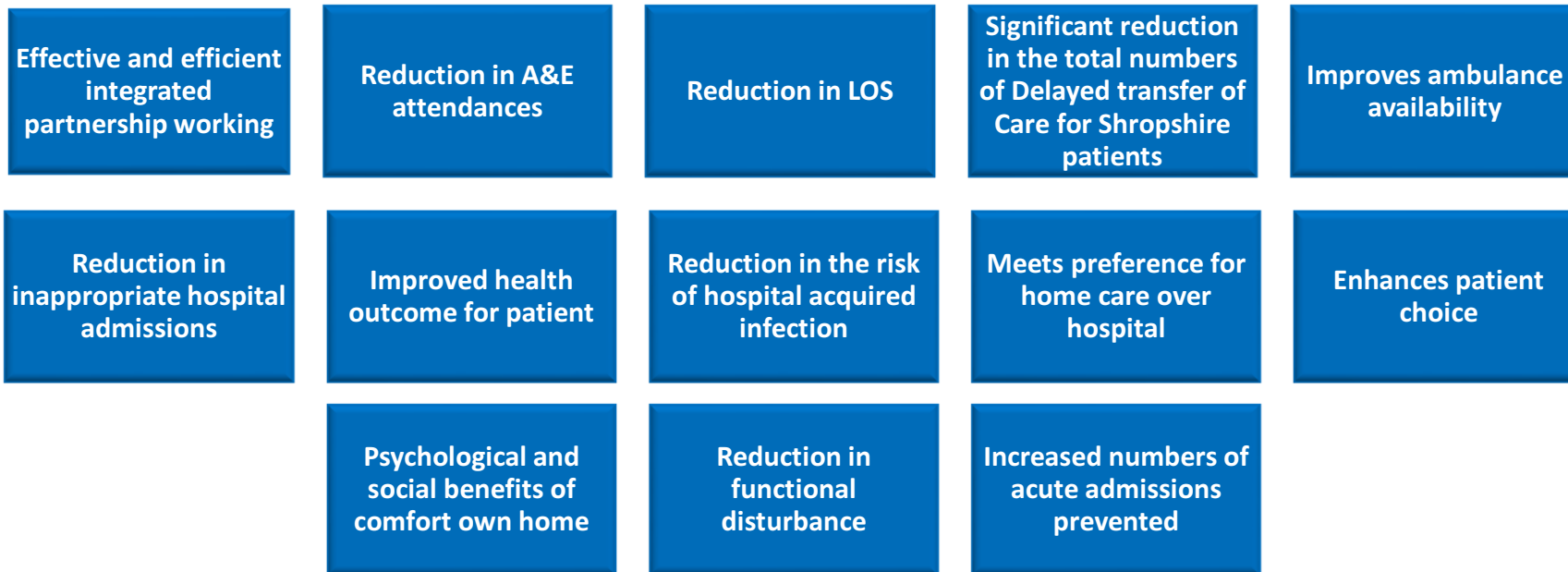
Develop time limited holistic independence plan enabling individuals and their carers to remain as independent as possible, for as long as possible

Acknowledgement/outcome of all referrals within 20 minutes

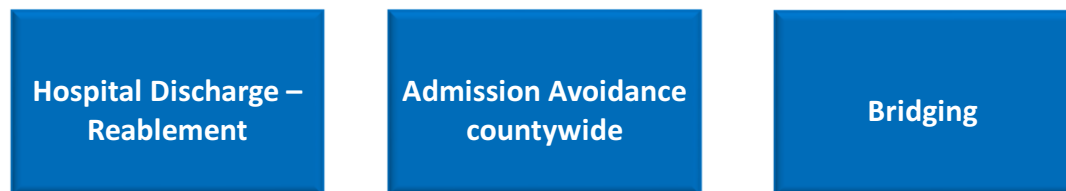
Service can commence within 2 hours at the persons home

Provide advice, information and signposting Undertake Assessments for Care Act Eligibility

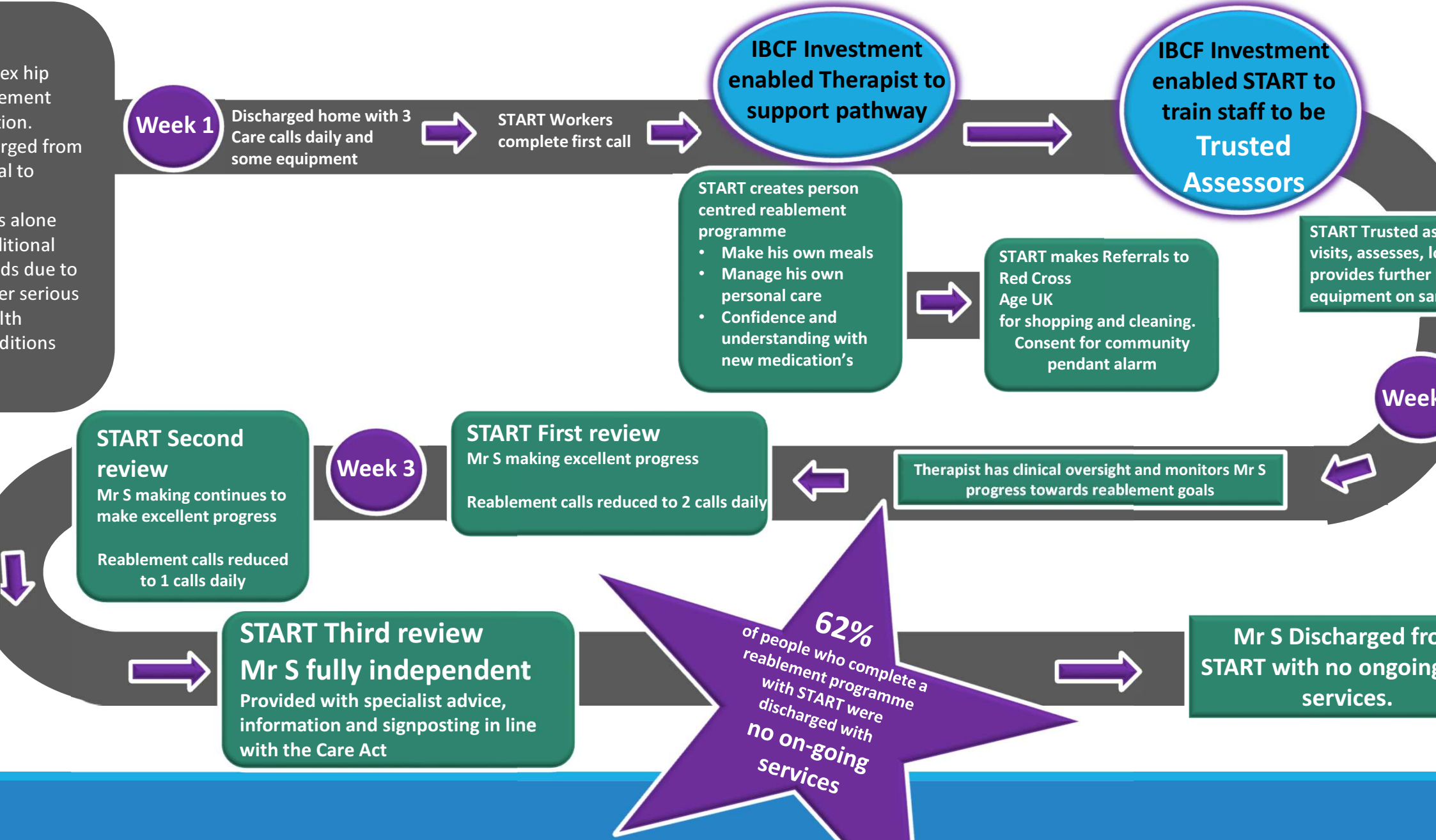
# BCF Funding Has Enabled **START** To Support More People Leading To More Positive Outcomes



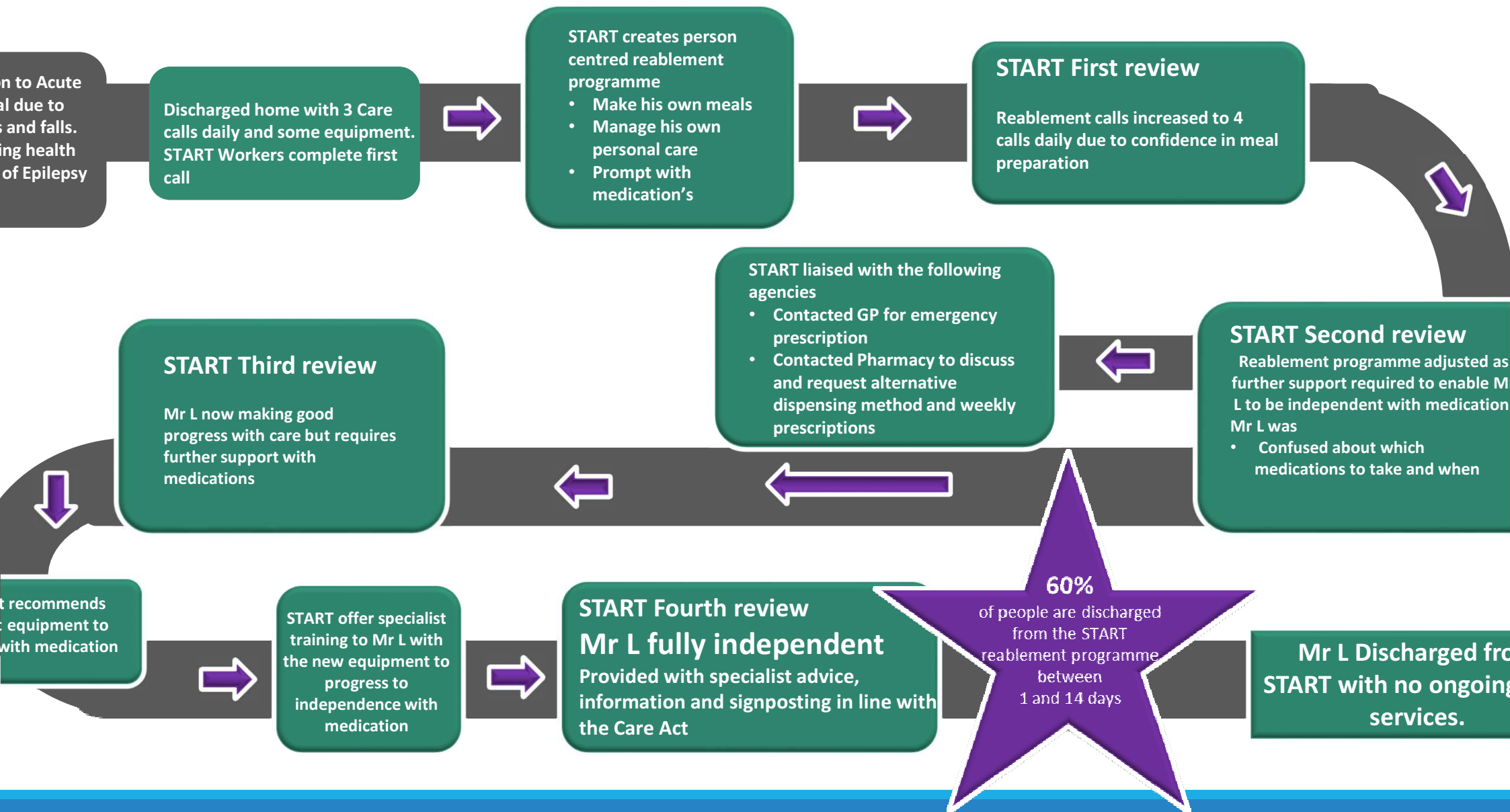
These programmes of care



# Case Study Mr S – START 3 Week Complex Reablement Programme



# Mr L – Case Study START-Reablement programme





**60%**  
of people are discharged  
from the START  
reablement programme  
between  
1 and 14 days

There has been a  
**350%** increase in the  
total number of  
people being  
supported within  
**START**  
71 being supported  
8/01/21



**IBCF Funding Has Enabled  
More People to have the  
benefit of START reablement  
leading to more positive  
outcomes**

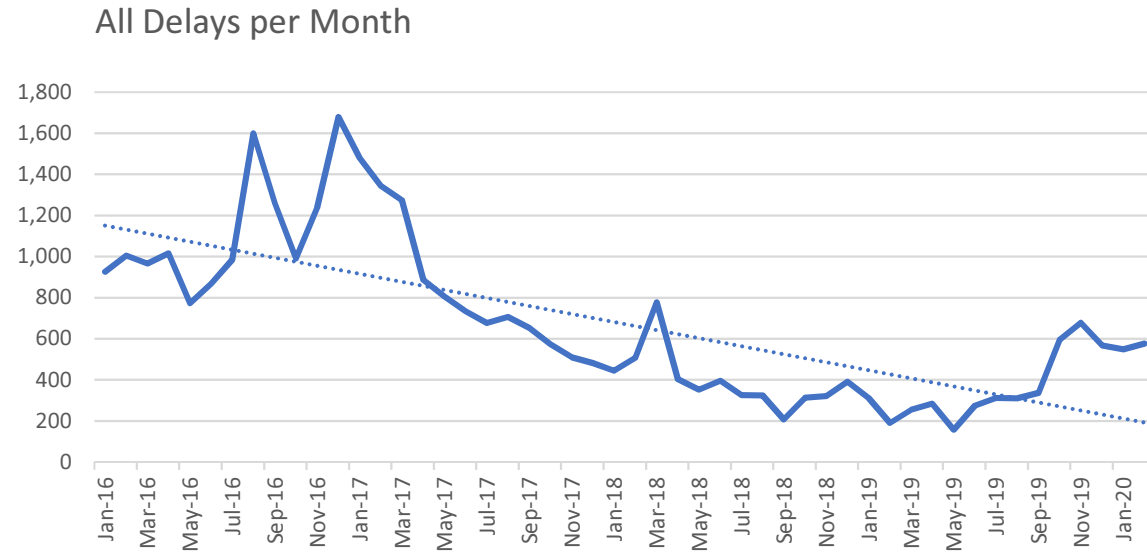
**62%**  
of people who complete a reablement  
programme with START were  
discharged with  
**no on-going services**



## IBCF Funding supported the significant reduction in DTOC

Delayed transfer of care (DTOC) is when an adult (18+ years) patient is ready to go home but is still occupying a hospital bed.

IBCF funding contributed to a significant reduction in the total numbers of Delayed transfer of Care for Hampshire patients, and this reduction is ongoing.



## Meet some of the Award Winning START Team



START were  
voted Adult  
Social Care and  
Housing Team  
of Year 2019

Please note this photo was taken P  
days.